

# CoreStation CX Remote Workstations

## High Performance Digital Workspace Infrastructure

### Features and Benefits

#### Key Features:

- 2U modular chassis with up to four independent (0.5U each) workstation compute nodes
- Dual 4<sup>th</sup> or 5<sup>th</sup> Gen Xeon CPUs up to 64 cores per CPU
- Up to 4TB RAM per node
- Dual NVIDIA or Intel GPUs
- Fault tolerant power supplies, fans, and local storage
- M.2 NVMe local flash storage

#### Designed for Workstations

- Deliver class-leading workstation performance remotely from the datacenter
- Modular scalability – add workstation nodes as you grow
- Fully supported desktop operating systems
- Direct connection or connection via a broker (Leostream, Ommissa, and Citrix)

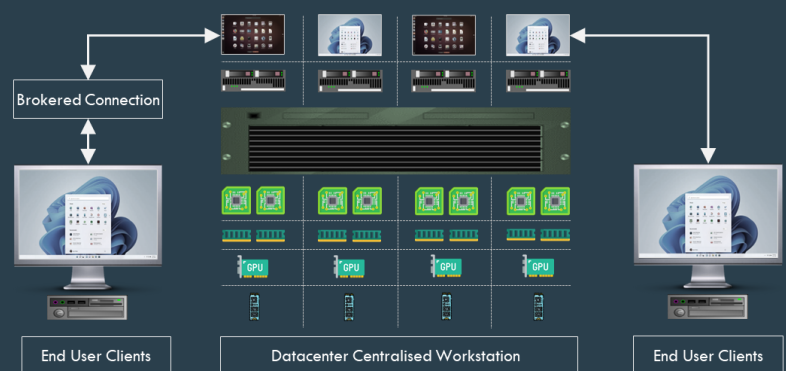
#### Management & Reliability

- Embedded hardware management and intelligent provisioning with iDRAC
- Single pane of glass with Dell OpenManage integration with Microsoft, Broadcom, ServiceNow, RedHat Ansible

### High Density Remote Workstation Solutions

#### Dedicated Remote 0.5U Workstations with Dual Xeon CPUs & GPU

CoreStation for Remote Workstations CX provides a modular, scalable, and flexible platform for deploying dedicated workstations for enterprise users who want to keep their compute resources in the datacenter as they need more performance than a virtual desktop delivers. This approach delivers higher levels of data security as compute is now in the datacenter, but also removes the issue of excessive heat and power requirements from the deskside.



#### Scalable, Flexible, and Density Optimized

Utilizing a modular chassis, CoreStation for Remote Workstations CX platform holds up to four independent workstation nodes per 2U chassis, each node configurable up to dual Xeon CPUs, up to 4TB of memory, and up to two GPU cards per workstation node.

To support graphically intensive workloads, the CoreStation platform supports NVIDIA RTX or Intel Arc Pro GPU cards to deliver high-end graphics performance.

With enterprise class datacenter infrastructure comes datacenter levels of availability. Each CoreStation chassis supports dual power supplies, redundant fans, and RAID-based internal storage.

As a remote workstation, the CoreStation CX solution fully supports desktop operating systems such as Windows 10, Windows 11, and Ubuntu Desktop.

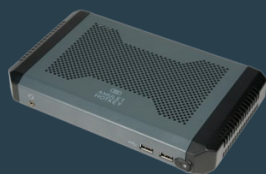
# CoreStation for Remote Workstations

## High Performance Digital Workspace Infrastructure

### Related Products

#### DX Enterprise Thin Clients

To connect to your remote workstation, your end users require a client device. Amulet Hotkey 5<sup>th</sup> Gen DX1500 and DX1700 clients deliver an end-to-end solution with a range of thin client devices built with the enterprise and security in mind.



- Intel U300, i3, or i5 CPU
- Up to 32GB RAM
- Up to 256GB flash storage
- Copper RJ45 or Fibre SFP
- Case tamper switches
- Agnostic OS support (Becrypt, IGEL, Stratodesk, Unicon, Windows 10, 11, and IoT, RHEL)

### CoreStation for VDI CX Specifications

Component	Configuration Options
Form Factor	2U rackmount chassis with four individual compute nodes (800mm depth)
CPU	Up to two 4 <sup>th</sup> or 5 <sup>th</sup> Gen Intel® Xeon® CPUs up to 64 cores per CPU
Memory	Up to 5200 MT/s RDIMM with 16 x DIMM slots supporting up to 4TB
Storage	M.2 NVMe Gen 3 up to 4TB with optional hardware RAID
Graphics (GPU)	NVIDIA RTX A2000 6GB/12GB NVIDIA T1000 4GB/8GB NVIDIA RTX 4000 ADA 20GB
Networking	Intel or Broadcom OCP 3.0 network adapter up to Quad Port 10/25GbE Dedicated 1Gbps management network port
Internal Storage	Internal M.2 NVMe Gen 3 boot drive up to 4TB with hardware RAID 1 Internal M.2 NVMe Gen 5 up to 8TB
Hot-swap storage	Two hot-swap E3.S NVMe Gen 5 up to 30TB
OS Support	Microsoft Windows 10 Microsoft Windows 11 Ubuntu Desktop
Embedded Management	Dell iDRAC Enterprise out-of-band management
Power Supplies	Dual hot-plug fault tolerant power supplies shared between nodes
Power Consumption	500W – 1000W maximum per compute node
Operating Conditions	10°C to 27°C higher ambient temperature

### Contact Us

#### EMEA Sales

+44 (0) 20 7960 2400  
 emeasales@amulethotkey.com

#### N America Sales

+1 212 269 9300  
 ussales@amulethotkey.com

#### APJ Sales

+61 409 930 884  
 apsales@amulethotkey.com